



Art, Music, PE and Science Rotation Schedule 2011-2012



| SECOND GRADE 9:20-10:15 | Class | Monday | Tuesday | Wednesday | Thursday | Friday |
|----------------------------|---------------|---------|---------|-----------|----------|-------------------------------------|
| | 2A - Alonzo | Science | Music | PE | Art | See Friday Schedule on Page 2 |
| | 2B - Duff | Art | Science | Music | PE | |
| | 2C - Hall | PE | Art | Science | Music | |
| | 2D - Hudgeons | Music | PE | Art | Science | |

| FIRST GRADE 10:20-11:15 | Class | Monday | Tuesday | Wednesday | Thursday | Friday |
|----------------------------|---------------|---------|---------|-----------|----------|-------------------------------------|
| | 1A - Johnson | Science | Music | PE | Art | See Friday Schedule on Page 2 |
| | 1B - Graviett | Art | Science | Music | PE | |
| | 1C - Thomas | PE | Art | Science | Music | |
| | 1D - White | Music | PE | Art | Science | |

| KINDERGARTEN 11:50-12:45 | Class | Monday | Tuesday | Wednesday | Thursday | Friday |
|-----------------------------|-----------------|---------|---------|-----------|----------|-------------------------------------|
| | KA - Nowlin | Science | Music | PE | Art | See Friday Schedule on Page 2 |
| | KB - Arst | Art | Science | Music | PE | |
| | KC - Hill | PE | Art | Science | Music | |
| | KD - Lugeanbeal | Music | PE | Art | Science | |

| THIRD GRADE 12:50-1:45 | Class | Monday | Tuesday | Wednesday | Thursday | Friday |
|---------------------------|--------------|---------|---------|-----------|----------|-------------------------------------|
| | 3A - Embry | Science | Music | PE | Art | See Friday Schedule on Page 2 |
| | 3B - Gilmore | Art | Science | Music | PE | |
| | 3C - Gibbons | PE | Art | Science | Music | |
| | 3D - Lee | Music | PE | Art | Science | |

| FOURTH GRADE 1:50-2:45 See Rotating Calendar on Page 3 | Class | Day 1 | Day 2 | Day 3 | Day 4 | Day 5 |
|---|----------------|---------|---------|---------|---------|---------|
| | 4A - Mertens | PE | Science | PE | Music | Art |
| | 4B - Henderson | PE | Music | Art | PE | Science |
| | 4C - Davis | Art | PE | Science | PE | Music |
| | 4D - Grice | Science | PE | Music | Art | PE |
| | 4E - Fisk | Music | Art | PE | Science | PE |



Friday Schedule Kindergarten-Third Grade Sixth Six Weeks



Art and Music switch classes half-way through the period.
Science and PE switch classes half-way through the period.

Friday, April 20
Wednesday Classes
(Day of Drumming April 18)

Friday, April 27
Tuesday Classes
(STARR Test April 24)

Friday, May 4
Wednesday Classes
(STARR Test April 25)

Friday, May 11
Dragon Day

Friday, May 18

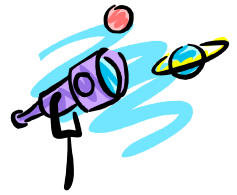
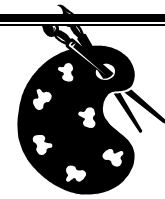
| | | | |
|---|---------|---|---------|
| A | Science | → | PE |
| B | PE | → | Science |
| C | Art | → | Music |
| D | Music | → | Art |

Friday, May 25
Field Day



Fourth Grade Rotation

Art, Music, PE & Science



Sixth Six Weeks

2011-2012

| Monday | Tuesday | Wednesday | Thursday | Friday |
|--------------------------|--------------------------|--------------------------|--|--------------------------|
| 16 DAY 5 | 17 DAY 1 | 18 Day of Drumming | 19 DAY 2 | 20 DAY 3 |
| 23 DAY 4 | 24 STARR TEST | 25 STARR TEST | 26 DAY 5 | 27 DAY 1 |
| 30 DAY 2 | 1-May DAY 3 | 2 DAY 4 | 3 DAY 5 | 4 DAY 1 Talent Day |
| 7 DAY 2 Talent Day | 8 DAY 3 Talent Day | 9 DAY 4 Talent Day | 10 DAY 5 Talent Day | 11 Dragon Day |
| 14 Day 1 | 15 DAY 2 | 16 DAY 3 | 17 DAY 4 | 18 DAY 5 |
| 21 DAY 1 | 22 DAY 2 | 23 DAY 3 | 24 DAY 4 | 25 Field Day |
| 28 Holiday | 29 DAY 5 | 30 DAY 1 | 31 End of Year Parties/ Early Release | 1 Teacher Work Day |