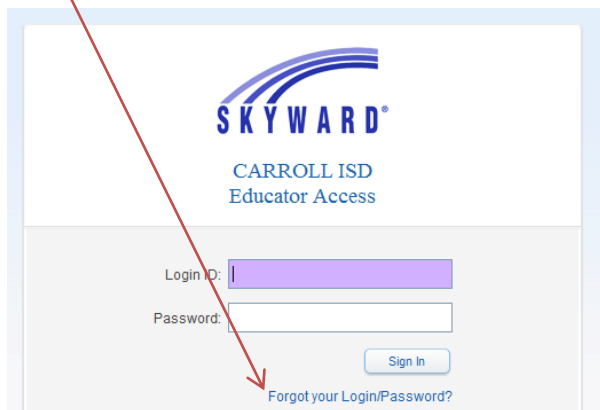


Go to www.southlakecarroll.edu and click on Family Access at top of page



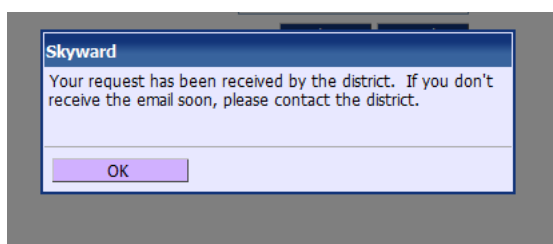
Click on "Forgot your Login/Password"



Enter in CAPTCHA words; then enter in **either** your username (Skyward Login ID) or the email address you provided for Family Access and Submit.



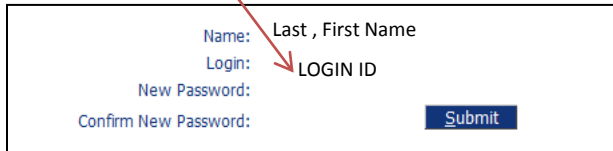
You will see this message on your screen.



Open your email inbox and look for an email from do.not.reply@southlakecarroll.edu Subject: Forgotten Login/Password Assistance. Make sure to check your junk mail box if you do not see the email in your regular inbox. Click or Paste the link contained within this email. You will then be prompted to create a new password for your account. Both your Name and Login ID will be displayed for you. *You will need your "Login" to use with the newly created password to enter Family Access.*

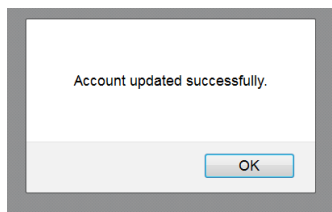
Forgotten Login/Password Assistance

Please enter a new password.



Name: Last , First Name
Login: LOGIN ID
New Password:
Confirm New Password:

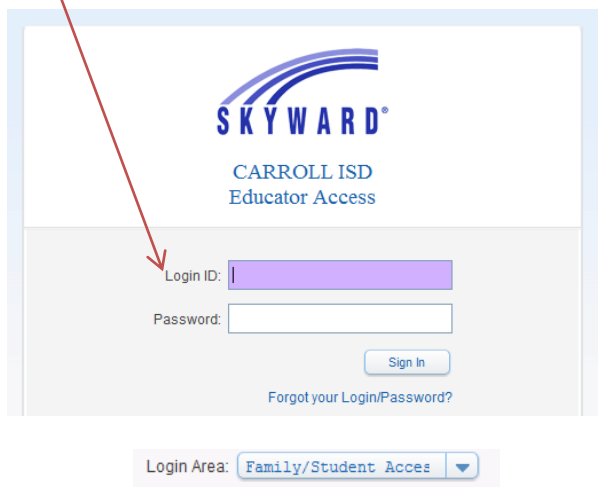
Click Submit and you will receive confirmation message below.



Now that you have a new password, you can use your Login and Password to enter your Family Access Account. Go to www.southlakecarroll.edu and click on Family Access at top of page.



Enter your Login and new Password



SKYWARD
CARROLL ISD
Educator Access
Login ID:
Password:

[Forgot your Login/Password?](#)
Login Area: